

**Resprep® 12- or 24-Port SPE Manifolds**

- Use with any standard male luer-end SPE cartridges.
- Inert, Teflon® sample guides reduce cross-contamination and carryover.
- Flexible sample collection rack will accommodate a variety of receiving vessels.
- Quick vacuum-release valve for better system control.
- Individual vacuum control for each cartridge—improves reproducibility.



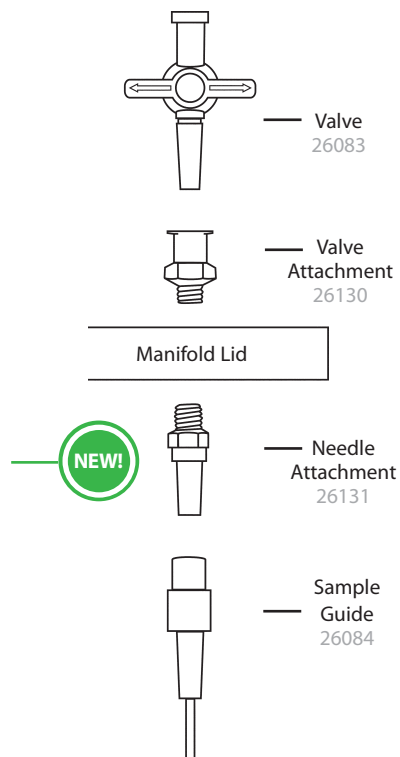
Description	qty.	cat.#
<b>Complete Resprep SPE Manifold, 12-Port</b> (Includes: glass basin with built-in vacuum regulator, polypropylene lid with 12 individual control valves, 12-position collection rack, 12 Teflon sample guides, and waste container)	kit	26077
<b>Complete Resprep SPE Manifold, 24-Port</b> (Includes: glass basin with built-in vacuum regulator, polypropylene lid with 24 individual control valves, 24-position collection rack, and 24 Teflon sample guides)	kit	26080

**Resprep® Manifold Replacement Parts**

Description	qty.	cat.#
Replacement Waste Container, 12-Port	ea.	24014
Replacement Vacuum Valve and Gauge Assembly	ea.	24008
Glass Vacuum Chamber w/gauge & valve for Resprep manifolds, 6 or 12-Port	ea.	25991
<b>Collection Rack</b>		
Collection Rack, 12-Port	ea.	26079
Collection Rack, 24-Port	ea.	26082
<b>Manifold Lid</b>		
Replacement Manifold Lid (sample guides not included), 12-Port	ea.	26078
Replacement Manifold Lid (sample guides not included), 24-Port	ea.	26081
<b>Manifold Lid Replacement Parts</b>		
Valves, 12 or 24-Port	2-pk.	26083
Valve Attachment	48-pk.	26130
Needle Attachment	48-pk.	26131
Sample Guides, 12 or 24-Port	12-pk.	26084

\*Not included in 24-port manifold (cat.# 26080 or 26082).

**Resprep® Manifold Replacement Parts**



**Oil-Free Vacuum/Pressure Station**

for 12-Port Resprep® SPE Systems

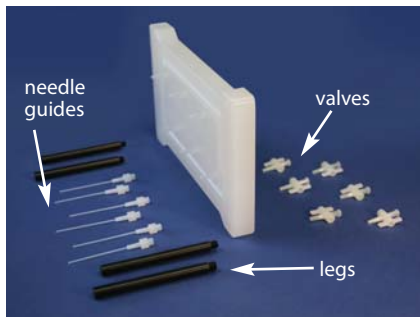
Allows switching from pressure to vacuum in a matter of seconds. Quiet, oil-free unit won't contaminate the extraction system or your samples. Provides 20" Hg (68k Pa) vacuum or 18 psi (124 kPa) pressure.

Description	qty.	cat.#
Oil-Free Vacuum/Pressure Station, 115VAC, 60Hz, US	ea.	24002
Oil-Free Vacuum/Pressure Station, 230VAC, 50Hz, Europe (CE certified)	ea.	24003
Vacuum Tubing (10ft./3m, 1/4" ID)	ea.	24016

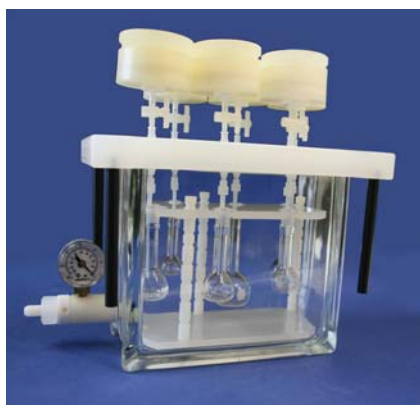
Not recommended for use with 24-port manifold.

Warranty period is one-year from date of purchase. Evaluation fee is charged for repairs out of warranty.





Lid components prior to assembly.



Fully assembled unit shown with Glass Vacuum Chamber (cat.# 25991) and Disk Holders (cat.# 24020)

**Resprep® 6-Port Disk Manifold Lid**

- Low cost option for disk extraction; fits standard 3 3/4" x 7 1/2" glass vacuum chambers.
- Doubles sample capacity—holds 6 disks, compared to standard 12-port manifolds, which only hold 3.
- Individual vacuum control for each port improves reproducibility.
- Collection plate design secures variety of receiving vessels.
- Inert Teflon® sample guides reduce cross-contamination and carryover.
- Compatible with any standard male luer end disk holder.



Description	qty.	cat.#
<b>Resprep 6-Port Disk Manifold Lid*</b>		
Includes: polypropylene lid with 6 ports, 6 nylon valves, 6 Teflon needle guides, 4 black lid legs, collection baseplate, collection plate for volumetric flasks, collection plate for concentrator tubes, 3 white collection plate posts, 12 collection plate retaining clips	kit	25992
<b>Accessories</b>		
Glass Vacuum Chamber w/gauge & valve for Resprep manifolds, 6 or 12-Port	ea.	25991
<b>Manifold Lid Replacement Parts</b>		
Valves, 12 or 24-Port	2-pk.	26083
Valve Attachment	48-pk.	26130
Needle Attachment	48-pk.	26131
Sample Guides, 12 or 24-Port	12-pk.	26084
Gasket, 12-port	2-pk.	24011

\*Vacuum chamber not included.



**Resprep® Sample Delivery System**

- Compatible with Resprep® 1, 3, 6, and 15 mL SPE cartridges and Diskcover-47 Extraction Disk Holder (cat.# 24020).
- 6 Teflon® transfer lines (1/8" OD x 1/16" ID x 36" long); each contains a different embedded color stripe, for easy sample identification.
- Specified in EPA drinking water methods.
- Tested to pH of 1 to ensure no contaminants leach from system.

Use the Resprep® Sample Delivery System to transfer large volumes of low viscosity samples directly from a bottle to a solid phase extraction cartridge or to a disk on a vacuum manifold system for extraction or cleanup. Each unit consists of 6 transfer lines with a stainless steel weight on one end, and a color-coded screw fitting and polyethylene terephthalate (PET) adapter on the opposite end.

Description	qty.	cat.#
Resprep Sample Delivery System	6-pk.	26250

# ChromaBLOGraphy

Topical and timely insights from top chromatographers.

Visit us at [blog.restek.com](http://blog.restek.com)

